A large, vibrant rainbow-colored metal coil dominates the left side of the page. The colors transition from blue on the left to red on the right, with green, yellow, and orange in between. The coil is highly reflective, showing bright highlights and deep shadows.

**COLOR  
SELECTION  
GUIDE**

# CLASSIC COLOURS

## SMP (Prepainted Steel)



BRIGHT WHITE



POLAR WHITE



APPLIANCE WHITE



CAMBRIDGE WHITE



WHITE-WHITE



BONE WHITE



SURF WHITE



CASHMERE



ANTIQUÉ LINEN



WICKER



TAN



BRIARWOOD TAN



GOLD



PEBBLESTONE



STONE GREY



REGENT GREY



CHARCOAL



IRON ORE



BLACK



DARK BROWN



COFFEE BROWN



METRO BROWN



MIST GREEN



SAGE GREEN



TURQUOISE



PACIFIC TURQUOISE



DEEP WATER GREEN



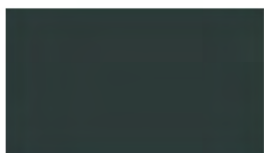
FOREST GREEN



SPRUCE GREEN



MELCHERS GREEN



DARK GREEN



BRIGHT RED



TILE RED



DARK RED



BURGUNDY



SAPPHIRE BLUE



ROYAL BLUE



SLATE BLUE



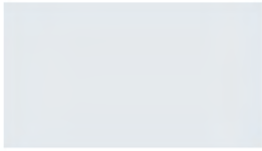
HERON BLUE



LABRADOR BLUE

# SIGNATURE COLOURS

## PVDF (Prepainted Steel)



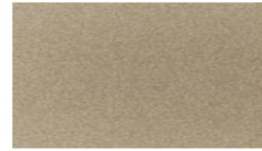
REGAL WHITE  
SRI: 78



PARCHMENT  
SRI: 58



SIERRA TAN  
SRI: 58



CHAMPAGNE METALLIC\*  
SRI: 49



MOCHA  
SRI: 35



WEATHERED COPPER  
SRI: 27



BRONZE  
SRI: 25



DARK BRONZE  
SRI: 27



COPPER PENNY\*  
SRI: 42



TERRA COTTA  
SRI: 42



COLONIAL RED  
SRI: 34



RETRO RED  
SRI: 25



HEMLOCK GREEN  
SRI: 37



FOREST GREEN  
SRI: 30



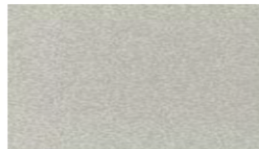
HARTFORD GREEN  
SRI: 27



TWILIGHT BLUE  
SRI: 25



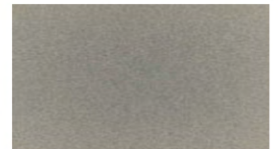
REGAL BLUE  
SRI: 25



SILVER METALLIC\*  
SRI: 58



OLD TOWN GREY  
SRI: 42



WEATHERED ZINC\*  
SRI: 40



OLD ZINC GREY  
SRI: 40



SLATE GREY  
SRI: 30

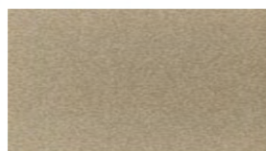


BLACK  
SRI: 24

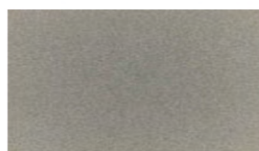
## PVDF (Prepainted Aluminum)



POLAR WHITE



CHAMPAGNE\*



WEATHERED ZINC\*



DARK BRONZE



SLATE GREY

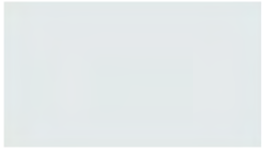


CHARCOAL

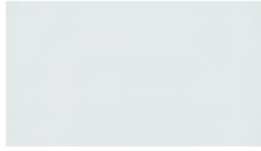


BLACK

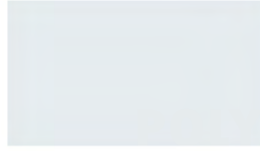
## POLYESTER (Prepainted Aluminum)



ULTRA WHITE



VAN TRAILER WHITE



COMMERCIAL WHITE



COMMERCIAL BROWN



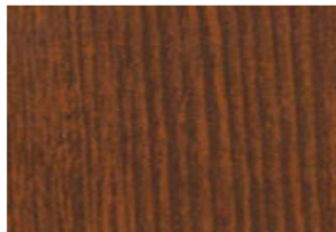
COMMERCIAL BLACK

# PRINTED SERIES

## PVDF (Prepainted Steel)



SADDLE



FRONTIER



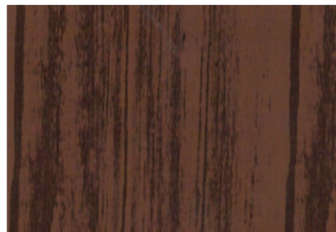
ACORN



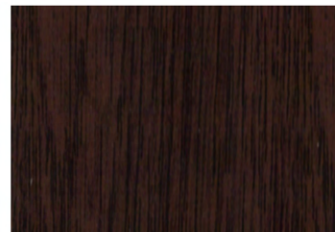
GUNSTOCK



ESPRESSO



DURANGO



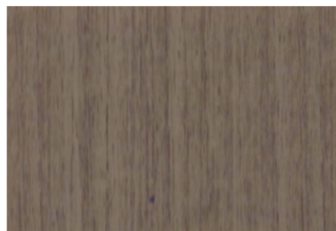
HOMESTEAD



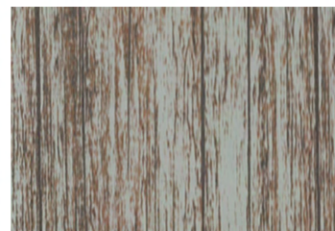
AUTUMN



BIRCH



PONDEROSA



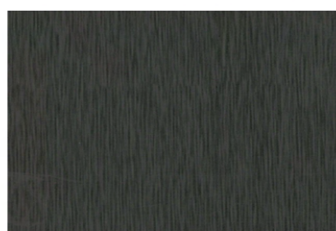
CANYON



BARNBOARD



LIGHT ZINC



DARK ZINC



RUSTIC RED



AGED COPPER

## POLYESTER (Prepainted Steel)



LIGHT PINE



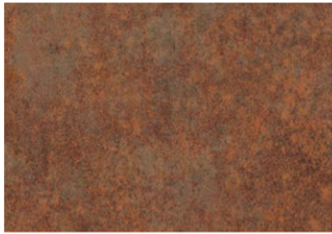
KNOTTY PINE



ASH WOOD



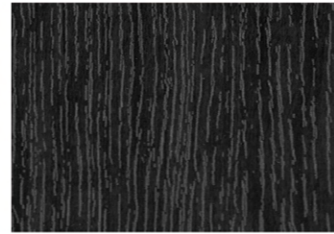
CONCRETE



CORTEN



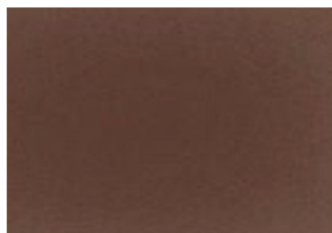
HERITAGE



MESQUITE

## TEX™ SERIES

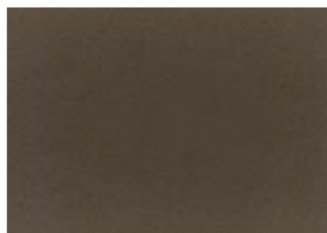
### SMP (Prepainted Textured Steel)



KONA BROWN



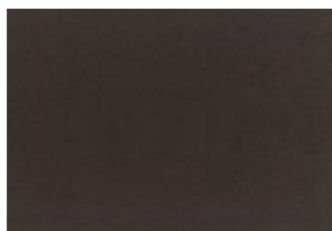
GRAPHITE



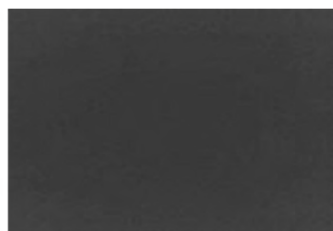
BURNISHED SLATE



ONYX BLACK



DARK BROWN



DARK GRAPHITE

# SPECIFICATIONS

COATING TEST METHOD		POLY	SMP	PVDF
<b>Dry Film Thickness</b>	ASTM D 1400-94 ASTM D 1005-95	0.75-1.85 Mil 0.90-1.15 Mil	0.75-1.85 Mil 0.90-1.15 Mil	0.75-1.85 Mil 0.90-1.15 Mil
<b>Specular Gloss</b>	ASTM D 523-89 @ 60°	20-35	20-35	20-35
<b>Humidity Resistance</b>	ASTM D 2247 (100% relative humidity @ 95°)	Passes 1000 hours	Passes 1000 hours	Passes 2000 hours
<b>Salt Spray</b>	ASTM B 117 (5% salt spray @ 95°)	Passes 1000 hours	Passes 1000 hours	Passes 1000 hours
<b>Acid Pollutant</b>	ASTM D 1308-87 20% sulfuric acid 18 hours, 10% muriatic acid 15 minutes	NO EFFECT	NO EFFECT	NO EFFECT
<b>Chalk Resistance</b>	ASTM D 4214 Hunter Units (Florida exposure @ 45°S)	Rating not <8 @ 20 years	Rating not <8 @ 30 years	Rating not <8 @ 40 years
<b>Color Retention</b>	ASTM D 4214 Hunter Units (Florida exposure @ 45°S)	Rating not >5Δ @ 20 years	Rating not >5Δ @ 30 years	Rating not >5Δ @ 40 years
<b>Adhesion/Reverse Impact</b>	ASTM D 3359-95a (reverse impacted 1/16" crosshatched) ASTM D 2794-93 (3,000 x inches of metal thickness)	NO ADHESION LOSS NO ADHESION LOSS	NO ADHESION LOSS NO ADHESION LOSS	NO ADHESION LOSS NO ADHESION LOSS
<b>Pencil Hardness</b>	ASTM D 3363	H <	H-25 (NCCA II-12)	HB-H
<b>Flexibility T-Bend</b>	ASTM D 4145-83	2T no pickoff	2T no pickoff	2T no pickoff
<b>Abrasion Resistance</b>	ASTM D 968-93 (to expose 5/32" of substrate)	15 Litres	25-40 Litres	100 Litres
<b>Graffiti Resistance</b>	ASTM D 6578 (cleanability of defaced panels- spray paint, pens, etc.)	NO EFFECT	NO EFFECT	NO EFFECT
<b>Warranty</b>		20-year limited warranty	40-year limited warranty	40-year limited warranty

Values displayed above are for Residential, Commercial, and School installation. For Industrial and Severe Marine applications, please contact your Cascadia Metals sales representative. Due to the printing process, actual paint colours may vary from the samples shown. Colour samples shown approximate actual paint colors as closely as possible. Colours may vary by region. Larger samples are available upon request and strongly recommended. \*Metallic Colors, TEX Series, Printed Series; please be advised these colours are batch-sensitive and directional in nature. We strongly advise against mixing batches on any project.